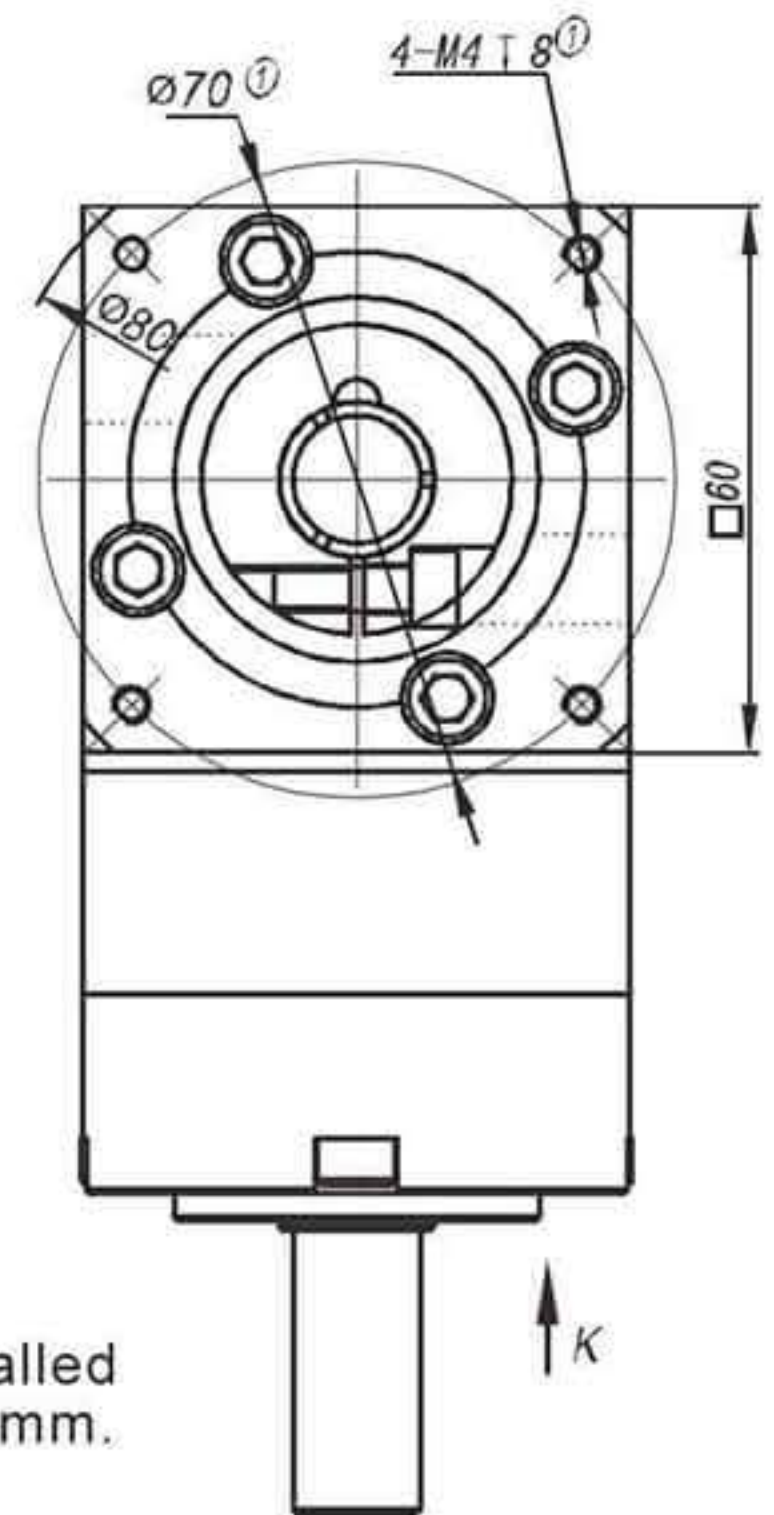
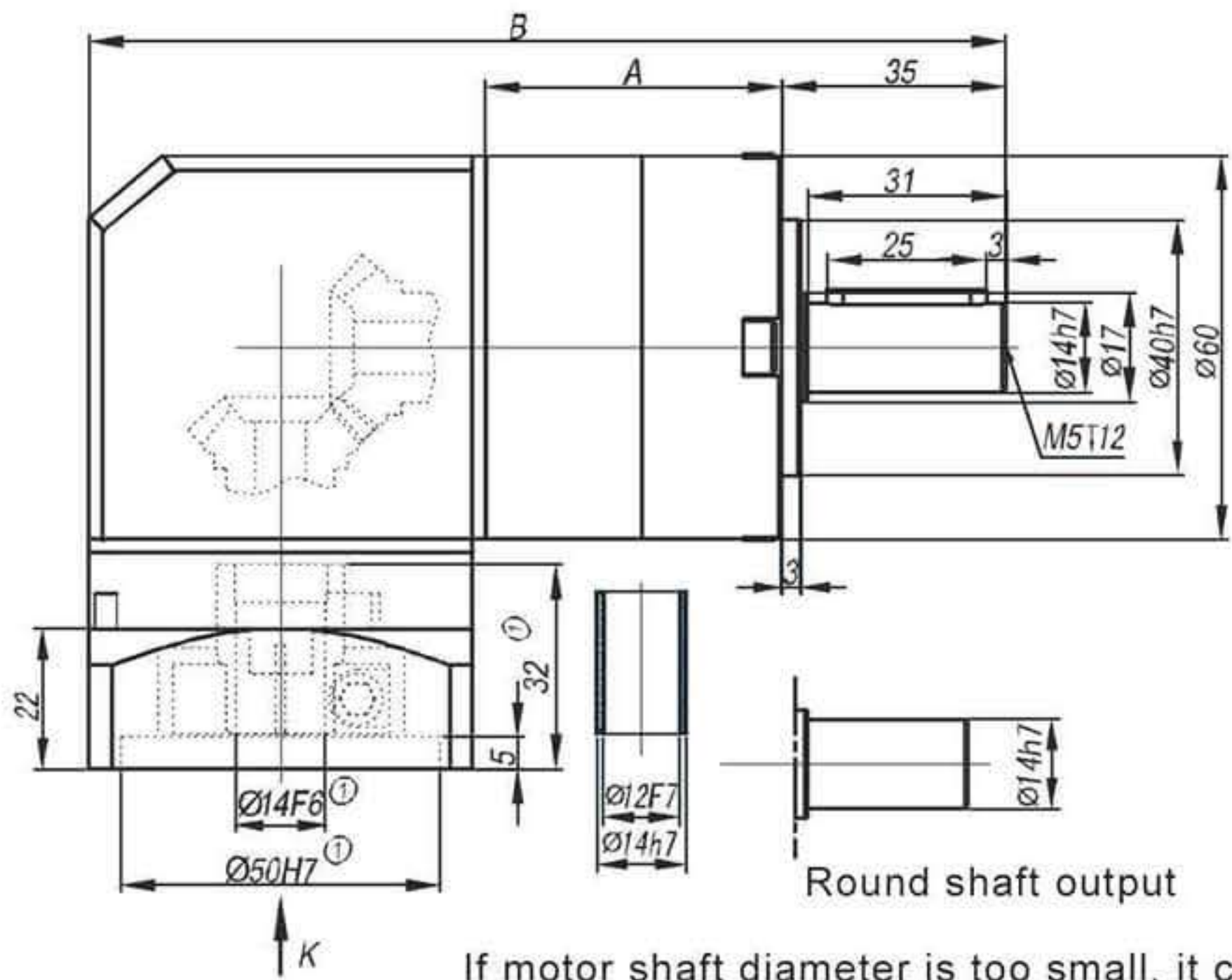
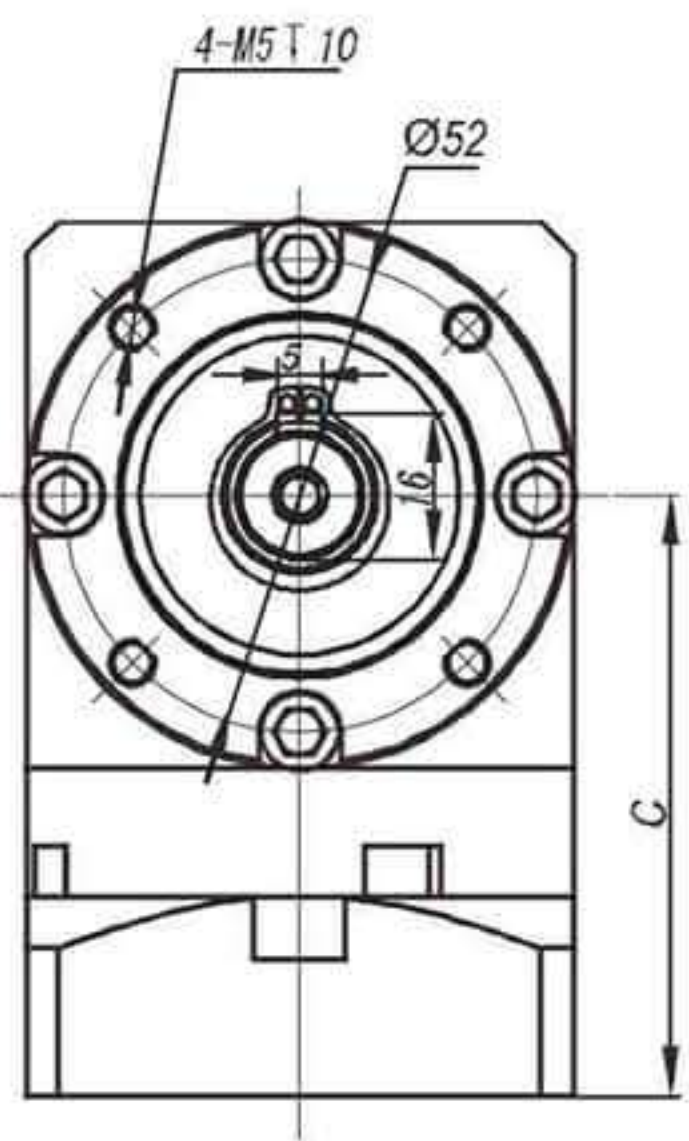
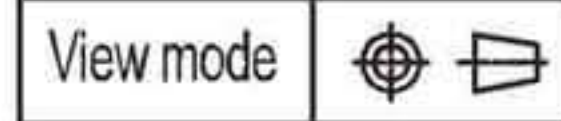


ZWLE60



If motor shaft diameter is too small, it can be installed with the bushing, minimum bushing thickness is 1mm.

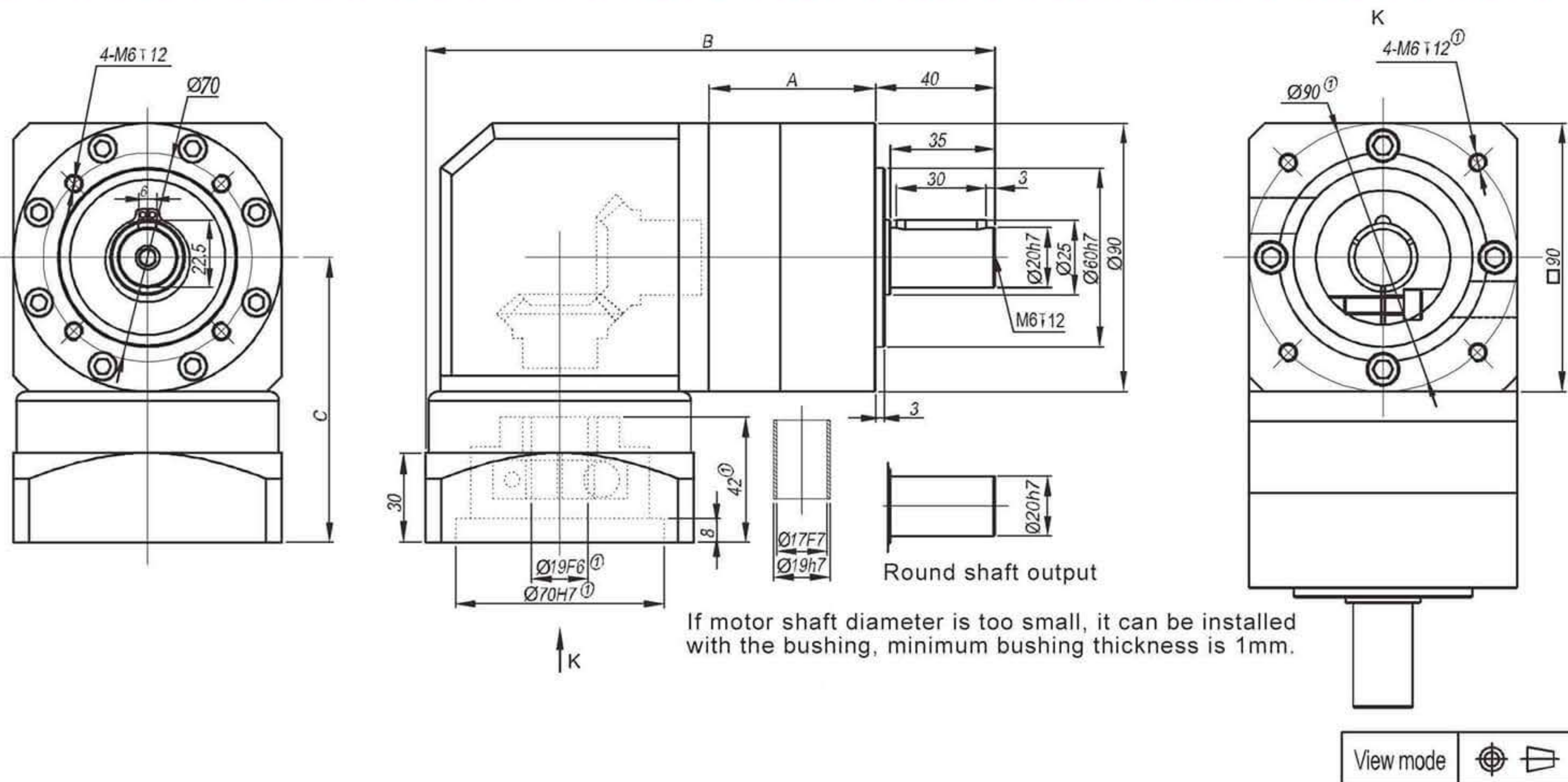


Stage	Stage 1 (i: 3 4 5 7 10)			Stage 2 (i: 12 16 20 25 28 35 40 50 70)			Stage 3 (i: 64 80 100 125 140 175 200 250 350 400 500 700 1000)		
	A	B	C	A	B	C	A	B	C
Length(mm)	46	143.5	66.0	62	160.0	66.0	78	176.5	66.0
No load torque(Nm)	about 0.6			about 0.3			about 0.3		
Efficiency withfull load(%)	95			93			90		
Back lash(arcmin)	<12			<15			<18		
Noise(dB)	≤58			≤58			≤58		
Weight(Kg)	2.2			2.5			2.8		
Direction of rotation	Input and output in different directions								

Not listed parameters refer to the PLE060 (including the maximum radial force rated input speed, the maximum input speed \ maximum axial force, the average life expectancy, torsional rigidity, lubricating oil, protection grade, installation, reduction ratio, rated output torque, maximum output torque, moment of inertia)

Subscript ①: We offer different adapter for different size of motors. Our speed reducer can be matched to any motor.

ZWLE90

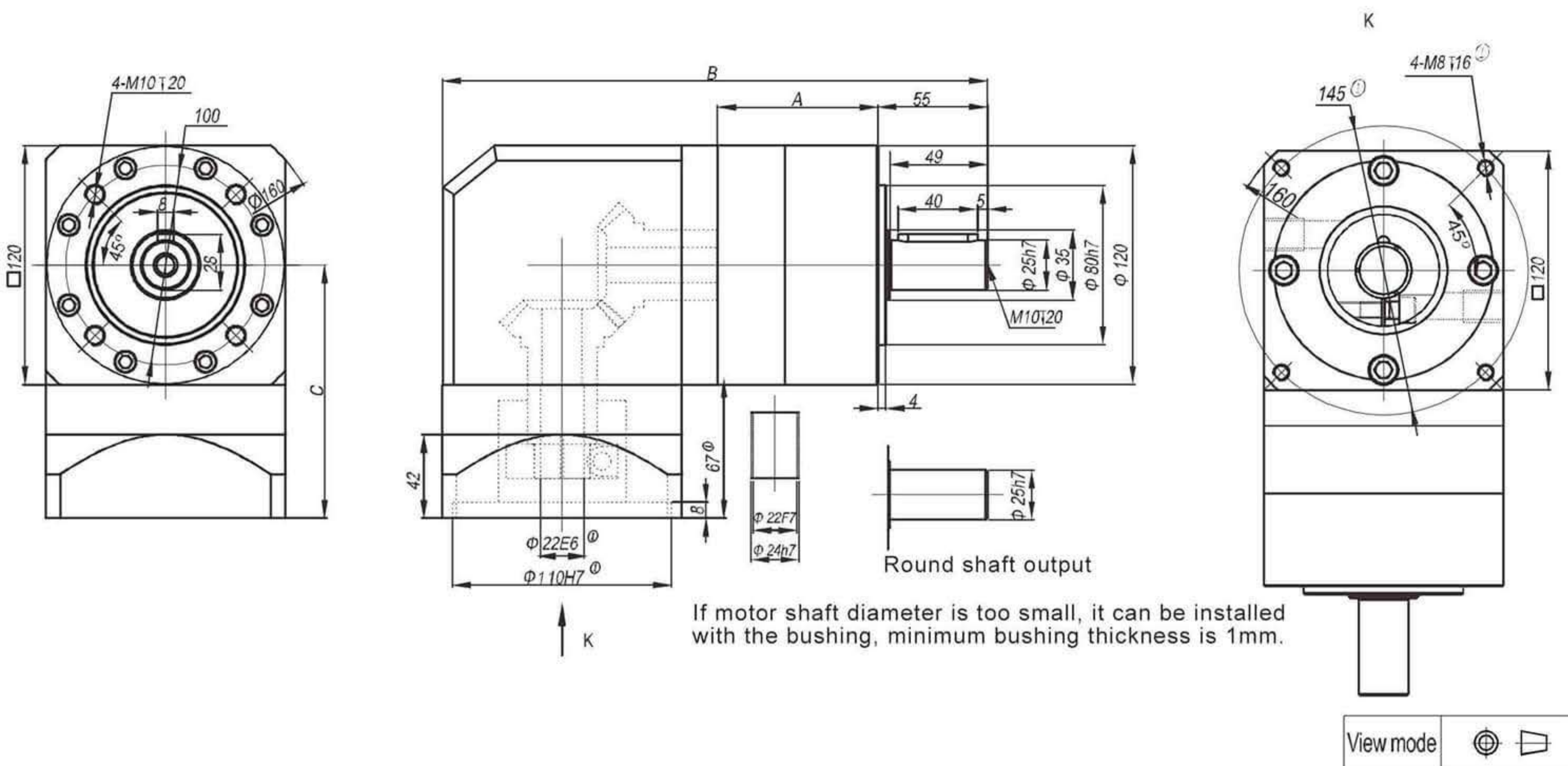


Stage	Stage 1 (i: 3 4 5 7 10)			Stage 2 (i: 12 16 20 25 28 35 40 50 70)			Stage 3 (i: 64 80 100 125 140 175 200 250 350 400 500 700 1000)		
	A	B	C	A	B	C	A	B	C
Length(mm)	55	191.0	95.5	78.5	215.0	95.5	101.5	239.0	95.5
No load torque(Nm)	about 0.8			about 0.4			about 0.4		
Efficiency with full load(%)	95			93			90		
Back lash(arcmin)	<12			<15			<18		
Noise(dB)	≤62			≤62			≤62		
Weight(Kg)	4.7			5.3			5.9		
Direction of rotation	Input and output in different directions								

Not listed parameters refer to the PLE060 (including the maximum radial force rated input speed, the maximum input speed \ maximum axial force, the average life expectancy, torsional rigidity, lubricating oil, protection grade, installation, reduction ratio, rated output torque, maximum output torque, moment of inertia)

Subscript ①: We offer different adapter for different size of motors. Our speed reducer can be matched to any motor.

ZWLE120



If motor shaft diameter is too small, it can be installed with the bushing, minimum bushing thickness is 1mm.

View mode

Stage	Stage 1 (i: 3 4 5 7 10)			Stage 2 (i: 12 16 20 25 28 35 40 50 70)			Stage 3 (i: 64 80 100 125 140 175 200 250 350 400 500 700 1000)		
	A	B	C	A	B	C	A	B	C
Length(mm)	80	273.5	127.0	112.0	305.0	127.0	143.5	336.5	127.0
No load torque(Nm)	about 1.3			about 0.6			about 0.6		
Efficiency with full load(%)	95			93			90		
Back lash(arcmin)	<12			<15			<18		
Noise(dB)	≤65			≤65			≤65		
Weight(Kg)	11.5			13.5			15.7		
Direction of rotation	Input and output in different directions								

Not listed parameters refer to the PLE060 (including the maximum radial force rated input speed, the maximum input speed \ maximum axial force, the average life expectancy, torsional rigidity, lubricating oil, protection grade, installation, reduction ratio, rated output torque, maximum output torque, moment of inertia)

Subscript ①: We offer different adapter for different size of motors. Our speed reducer can be matched to any motor.