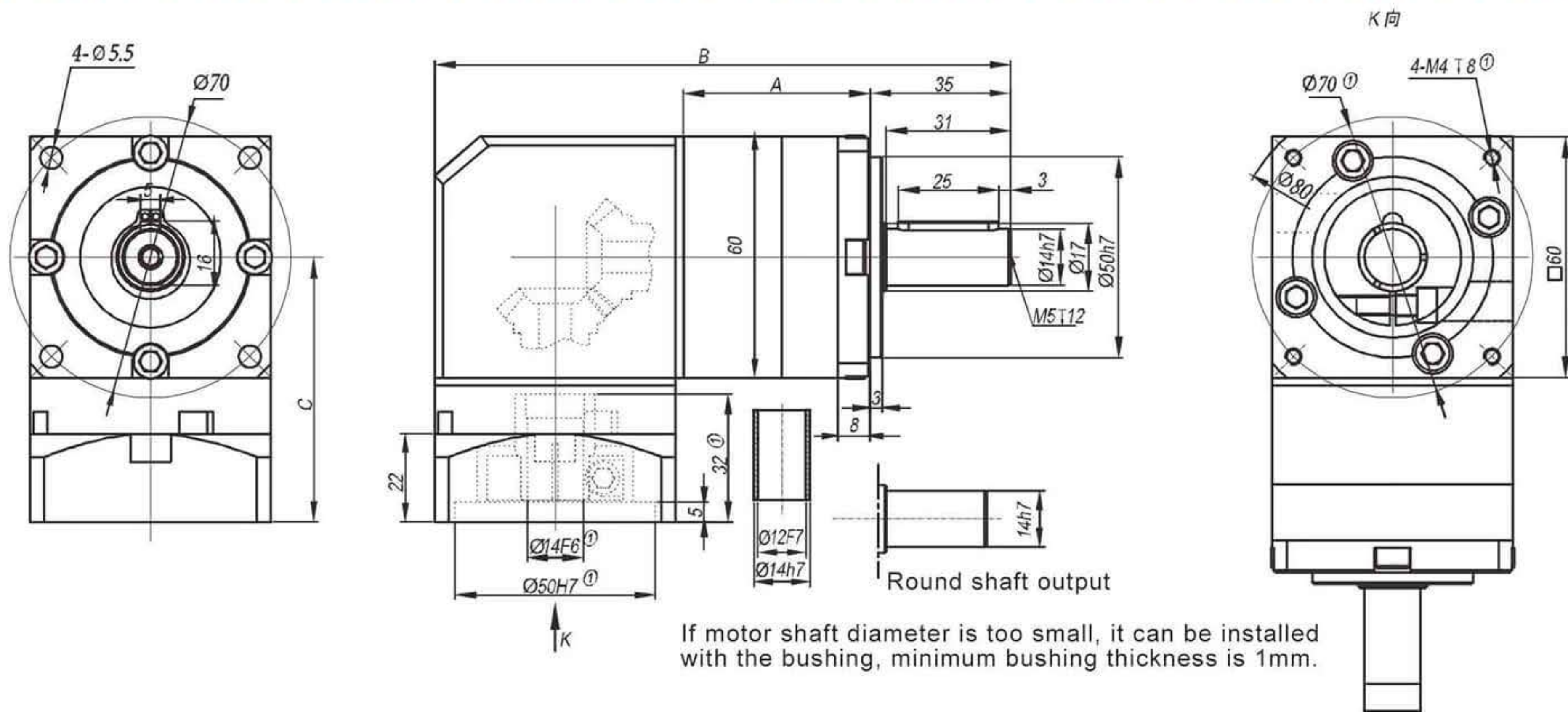


# ZWLF60



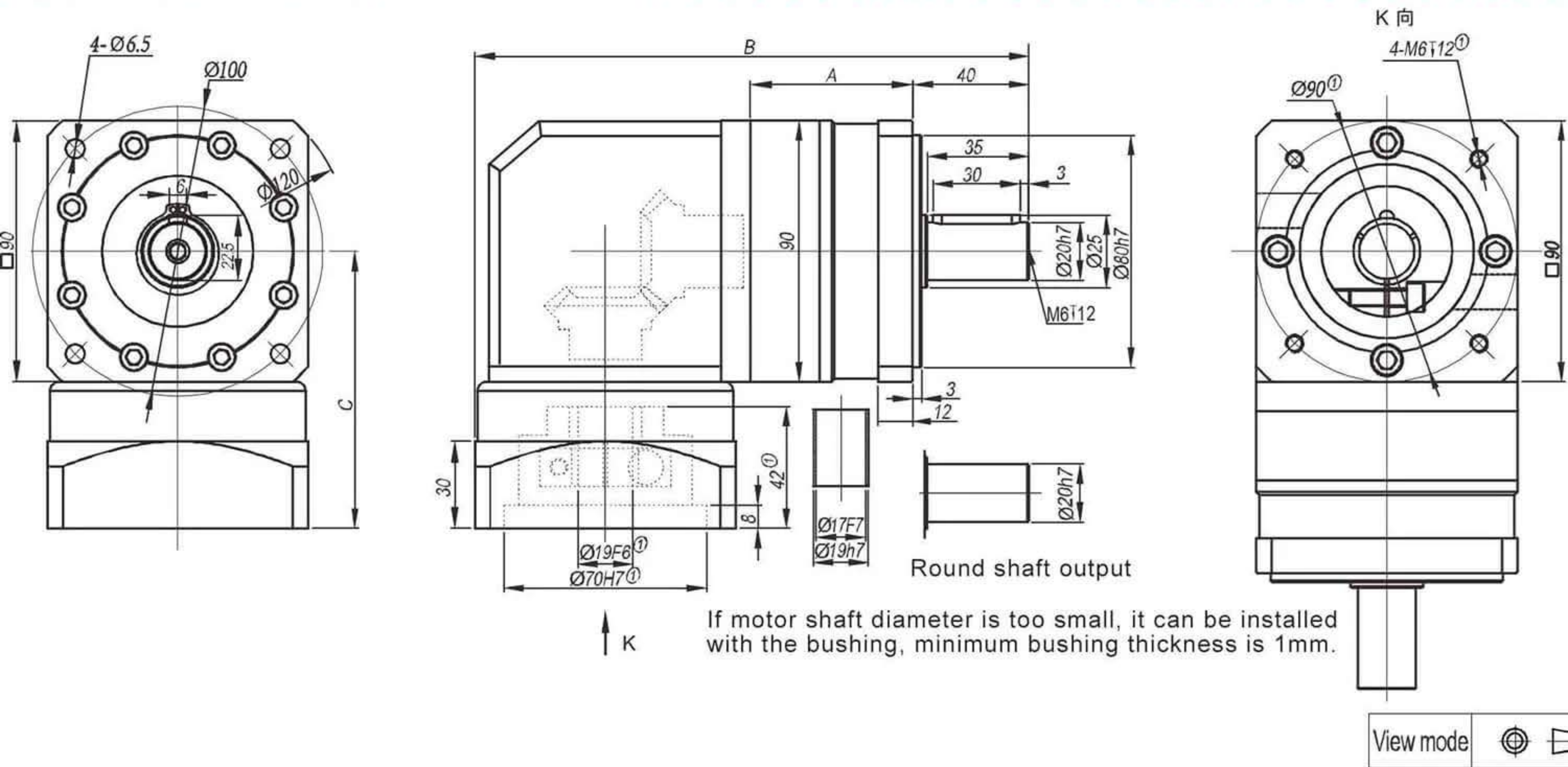
View mode

Stage	Stage 1 (i: 3 4 5 7 10)			Stage 2 (i: 12 16 20 25 28 35 40 50 70)			Stage 3 (i: 64 80 100 125 140 175 200 250 350 400 500 700 1000)		
	A	B	C	A	B	C	A	B	C
Length(mm)	46.5	143.5	66.0	63.0	160.0	66.0	79.5	176.5	66.0
No load torque(Nm)	about 0.6			about 0.3			about 0.3		
Efficiency withfull load(%)	95			93			90		
Back lash(arcmin)	<12			<15			<18		
Noise(dB)	≤58			≤58			≤58		
Weight(Kg)	2.2			2.5			2.8		
Direction of rotation	Input and output in different directions								

Not listed parameters refer to the PLE060 (including the maximum radial force rated input speed, the maximum input speed \ maximum axial force, the average life expectancy, torsional rigidity, lubricating oil, protection grade, installation, reduction ratio, rated output torque, maximum output torque, moment of inertia)

Subscript ①: We offer different adapter for different size of motors. Our speed reducer can be matched to any motor.

# ZWLF90



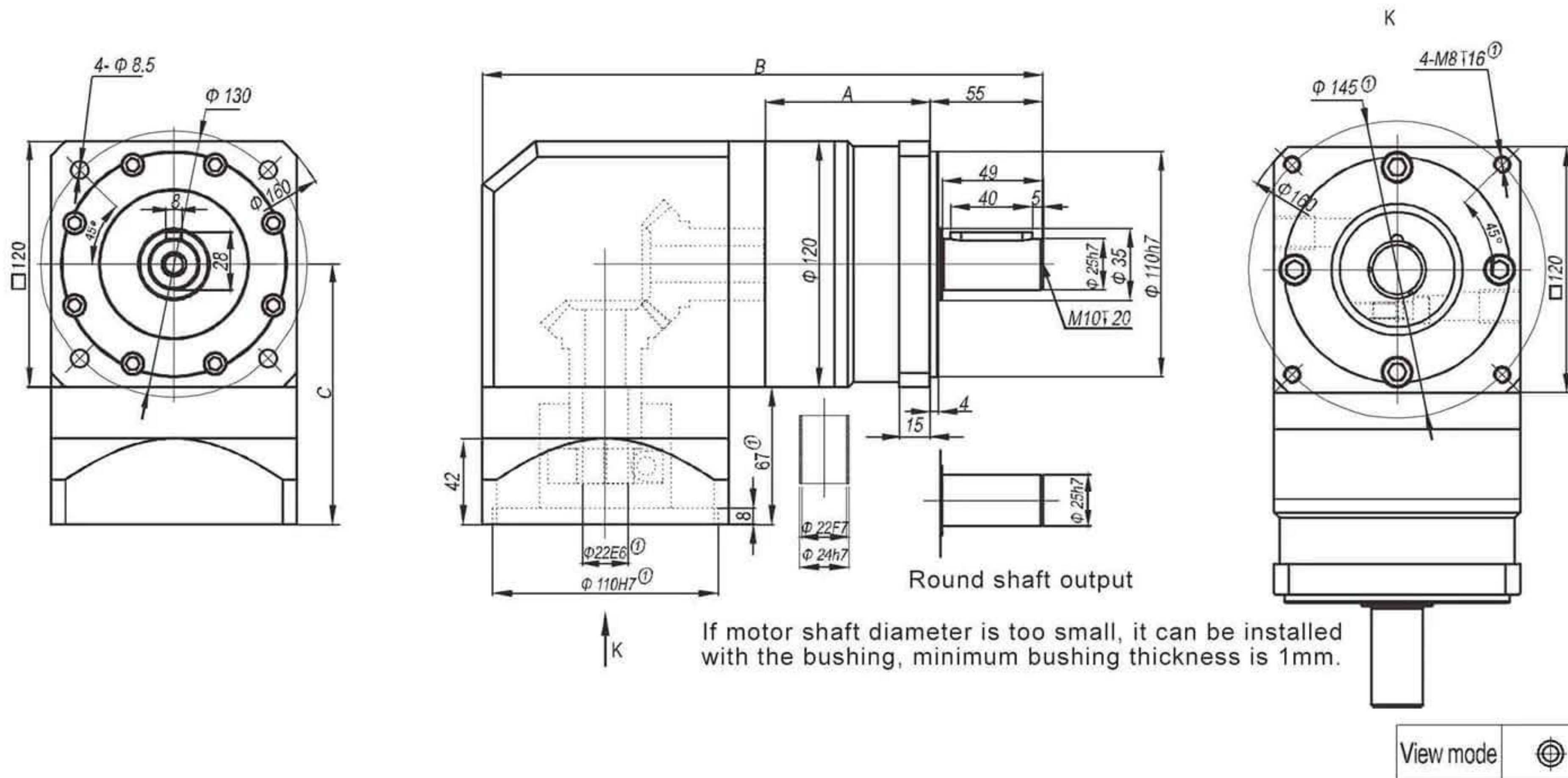
If motor shaft diameter is too small, it can be installed with the bushing, minimum bushing thickness is 1mm.

Stage	Stage 1 (i: 3 4 5 7 10)			Stage 2 (i: 12 16 20 25 28 35 40 50 70)			Stage 3 (i: 64 80 100 125 140 175 200 250 350 400 500 700)		
	A	B	C	A	B	C	A	B	C
Length(mm)	55	191.0	95.5	80	215.0	95.5	104	239.0	95.5
Load torque(Nm)	about 0.8			about 0.4			about 0.4		
Efficiency with full load(%)	95			93			90		
Back lash(arcmin)	<12			<15			<18		
Noise(dB)	≤62			≤62			≤62		
Weight(Kg)	4.7			5.3			5.9		
Direction of rotation	Input and output in different directions								

Not listed parameters refer to the PLE060 (including the maximum radial force rated input speed, the maximum input speed \ maximum axial force, the average life expectancy, torsional rigidity, lubricating oil, protection grade, installation, reduction ratio, rated output torque, maximum output torque, moment of inertia)

Subscript ①: We offer different adapter for different size of motors. Our speed reducer can be matched to any motor.

# ZWLF120



If motor shaft diameter is too small, it can be installed with the bushing, minimum bushing thickness is 1mm.

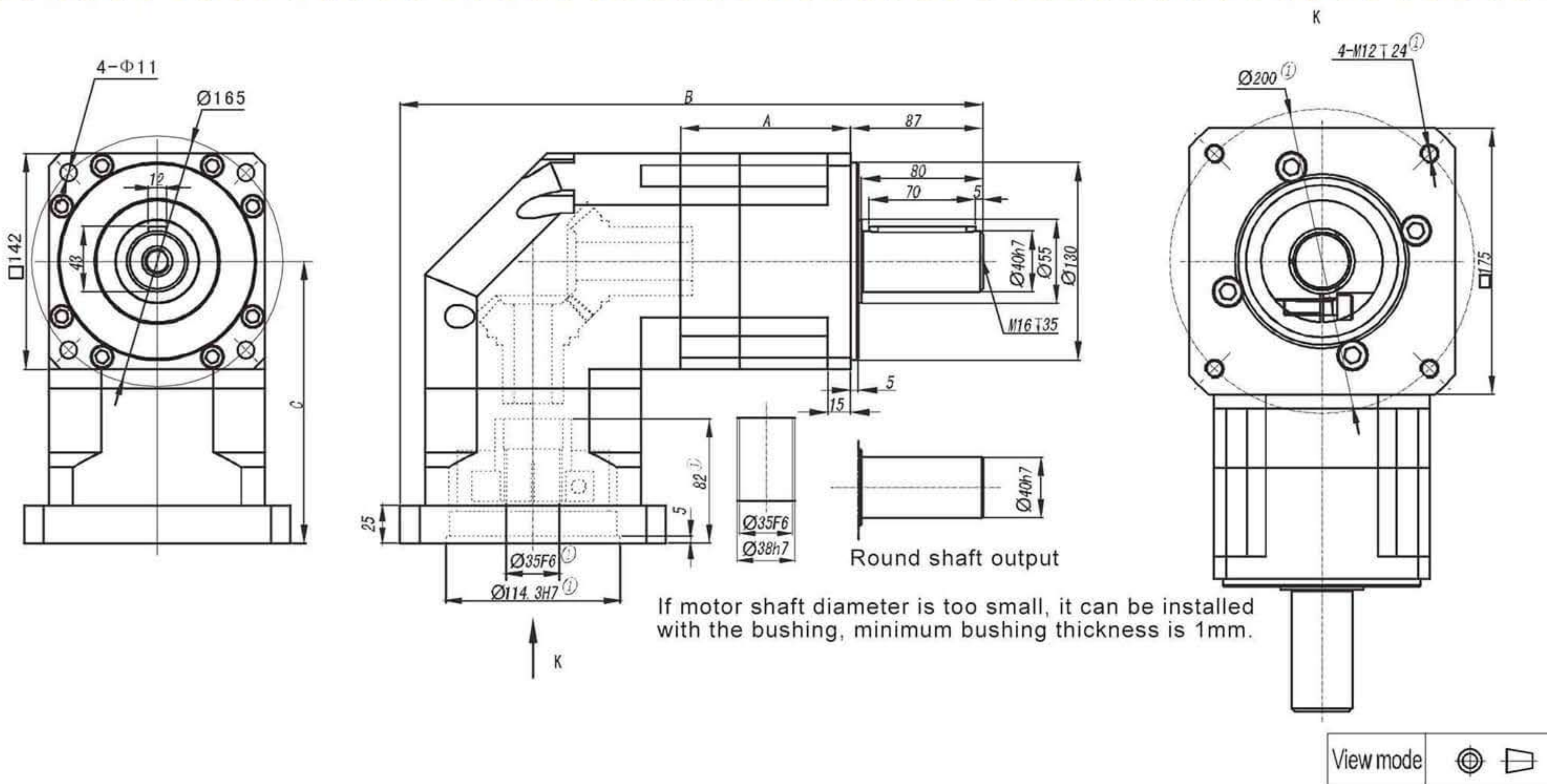
View mode

Stage	Stage 1 (i: 3 4 5 7 10)			Stage 2 (i: 12 16 20 25 28 35 40 50 70)			Stage 3 (i: 64 80 100 125 140 175 200 250 350 400 500 700 1000)		
	A	B	C	A	B	C	A	B	C
Length(mm)	80.5	273.5	127.0	112.0	305.0	127.0	143.5	336.5	127.0
No load torque(Nm)	about 1.3			about 0.6			about 0.6		
Efficiency with full load(%)	95			93			90		
Back lash(arcmin)	<12			<15			<18		
Noise(dB)	≤65			≤65			≤65		
Weight(Kg)	11.7			13.7			16.0		
Direction of rotation	Input and output in different directions								

Not listed parameters refer to the PLE060 (including the maximum radial force rated input speed, the maximum input speed \ maximum axial force, the average life expectancy, torsional rigidity, lubricating oil, protection grade, installation, reduction ratio, rated output torque, maximum output torque, moment of inertia)

Subscript ①: We offer different adapter for different size of motors. Our speed reducer can be matched to any motor.

# ZPLX142



Stage	Stage 1 (i: 3 4 5 8)			Stage 2 (i: 12 16 20 25 32 40 64)			Stage 3 (i: 60 64 80 100 120 160 200 256 320 512)		
	A	B	C	A	B	C	A	B	C
Length(mm)	112.0	383.5	185.5	151.0	422.5	185.5	190.0	461.5	185.5
No load torque(Nm)	about 3.2			about 2.1			about 2.1		
Efficiency withfull load(%)	95			93			90		
Back lash(arcmin)	<12			<15			<18		
Noise(dB)	$\leq 68$			$\leq 68$			$\leq 68$		
Weight(Kg)	26.5			31.5			37.5		
Direction of rotation	Input and output in different directions								

Not listed parameters refer to the PLE060 (including the maximum radial force rated input speed, the maximum input speed \ maximum axial force, the average life expectancy, torsional rigidity, lubricating oil, protection grade, installation, reduction ratio, rated output torque, maximum output torque, moment of inertia)

Subscript ①: We offer different adapter for different size of motors. Our speed reducer can be matched to any motor.